

Avant GS_LC

Front Fender Extension

Installation Guide

Fits **2013 + BMW R1200GS/ADV_LC**



Care Instructions:

Clean with soap and water.
Armor-All works well to restore appearance.

Tool Required:

Torx T25 Screwdriver

Parts:

2 Avant Brackets with self-locking nuts
2 10mm T25 Torx Screws
Avant

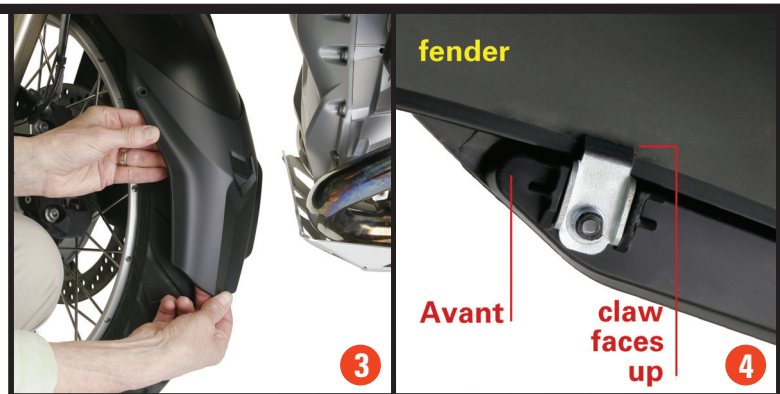
* PLACE THE BIKE ON ITS CENTER STAND ON LEVEL GROUND.

Turn the handle bars for installation convenience.
Clean the top side of your front fender.

- 1 Avant brackets feature two self-locking nuts to assure tight assembly.
- 2 Slip the Avant over the front fender until the tip of the fender fits snugly into the receiving shoe.



- 3 Make sure the sides fit up against the fender's side edges.
- 4 Position a bracket behind the mounting flange on one side between the raised ribs. The bracket claw faces up against the inside of the fender in between the two raised side ribs.



- 5 Tighten the screw with a T-25 Torx driver.
Install the opposite side bracket in the same way.
- 6 Check final alignment and **tighten all screws securely.**

Re-check screw tightness after the first ride and periodically thereafter.



WARNING AND DISCLAIMER: All parts manufactured, designed or sold by Machineart Moto ("MaMo") should be installed by a qualified motorcycle technician. The risk of injury is increased by improper installation or misuse of equipment. MaMo's customers must exercise good judgment in the use, control, alteration, part selection and installation, and maintenance of their motorcycles. In the event of a possible defect in material or design, or any other defect in a part manufactured, designed or sold by MaMo, the responsibility of MaMo is limited to a refund of the purchase price or the replacement of the part if MaMo determines the part to be defective, and subject to MaMo's inspection of the part within thirty (30) days from the date of purchase. (Note: any attempted repairs or modifications made to MaMo products will void this limited warranty). MaMo, under no circumstances will be responsible for incidental and/or consequential damages, property damage, personal injury damage, or damage, injury, cost or expense of any kind or nature whatsoever except as provided by law. MaMo makes no other warranty, express or implied, including without limitation any warranties of merchantability and fitness for a particular purpose.