

Avant 12 GS

Installation Guide



Front Fender Extension

Fits **2005~2012 BMW R1200GS** + **2013 ADV**

Care Instructions:

Clean with soap and water.
Armor-All works well to restore appearance.

Tool Required:

Torx T25 Screwdriver

Parts:

3 Avant Brackets with self-locking nuts
3 10mm T25 Torx Screws
Avant

PATENT US 8,191,912

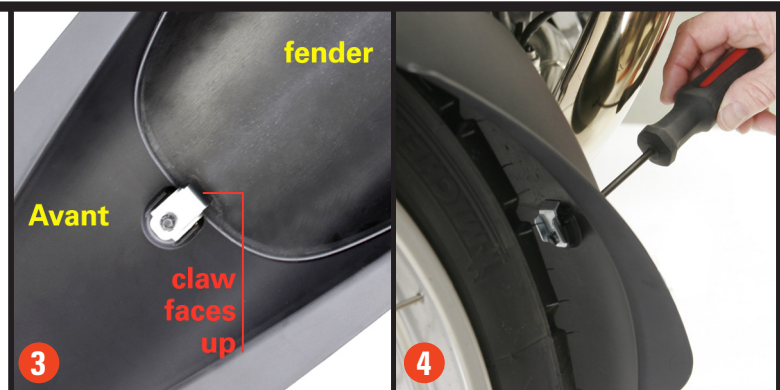
* PLACE THE BIKE ON ITS CENTER STAND ON LEVEL GROUND.

Turn the handle bars for installation convenience.
Clean the top side of your front fender.

- 1 Avant brackets feature three self-locking nuts to assure tight assembly.
- 2 Loosely pre-install the center bracket on the Avant.



- 3 Slip the Avant over the front fender until the center mounting boss makes contact with the fender's bottom edge. Make sure the side mounting flanges fit tightly against the fender's side edges.
- 4 Steady the center bracket with one hand, making sure it fits between the two raised ribs, while tightening the center screw with a T-25 Torx driver.



- 5 Position a bracket behind the mounting flange on the left hand side between the raised ribs. Make sure the claw faces up against the inside of the fender. Tighten the screw. Install the right hand side bracket in the same way.

- 6 Check final alignment and **tighten all screws securely.**

Re-check screw tightness after the first ride and periodically thereafter.



WARNING AND DISCLAIMER: All parts manufactured, designed or sold by Machineart Moto ("MaMo") should be installed by a qualified motorcycle technician. The risk of injury is increased by improper installation or misuse of equipment. MaMo's customers must exercise good judgment in the use, control, alteration, part selection and installation, and maintenance of their motorcycles. In the event of a possible defect in material or design, or any other defect in a part manufactured, designed or sold by MaMo, the responsibility of MaMo is limited to a refund of the purchase price or the replacement of the part if MaMo determines the part to be defective, and subject to MaMo's inspection of the part within thirty (30) days from the date of purchase. (Note: any attempted repairs or modifications made to MaMo products will void this limited warranty). MaMo, under no circumstances will be responsible for incidental and/or consequential damages, property damage, personal injury damage, or damage, injury, cost or expense of any kind or nature whatsoever except as provided by law. MaMo makes no other warranty, express or implied, including without limitation any warranties of merchantability and fitness for a particular purpose.